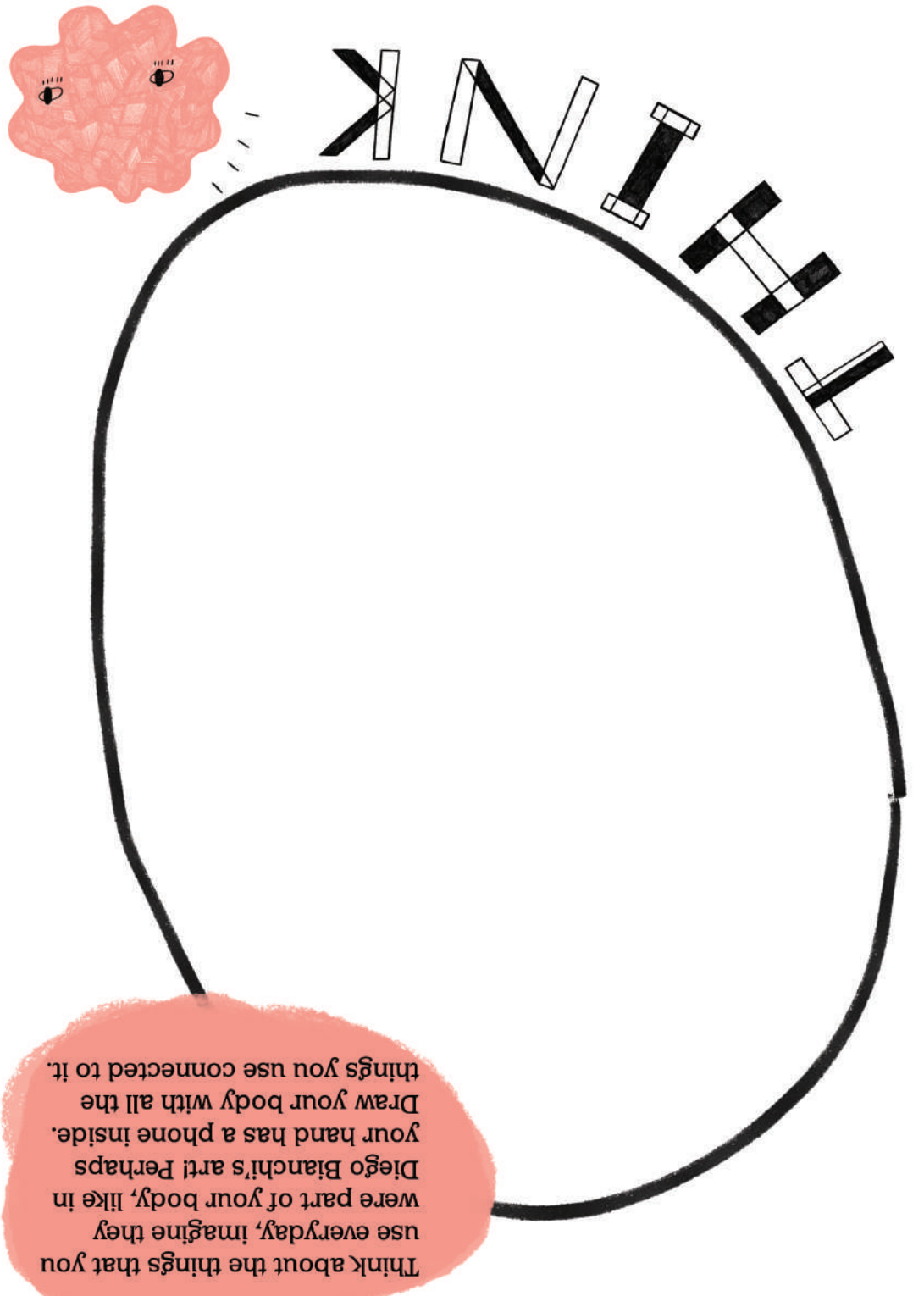
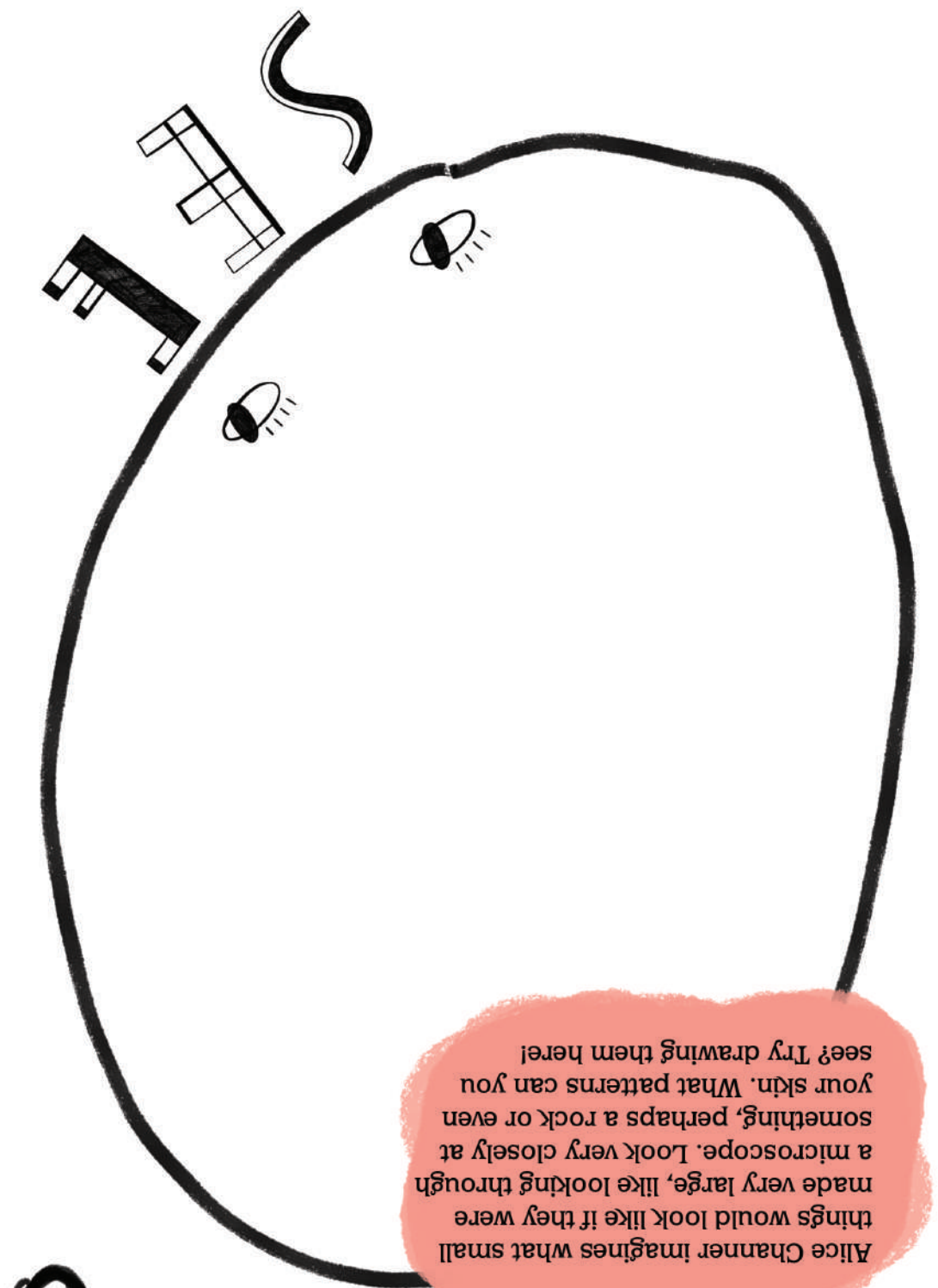


Draw your favourite artwork from today!



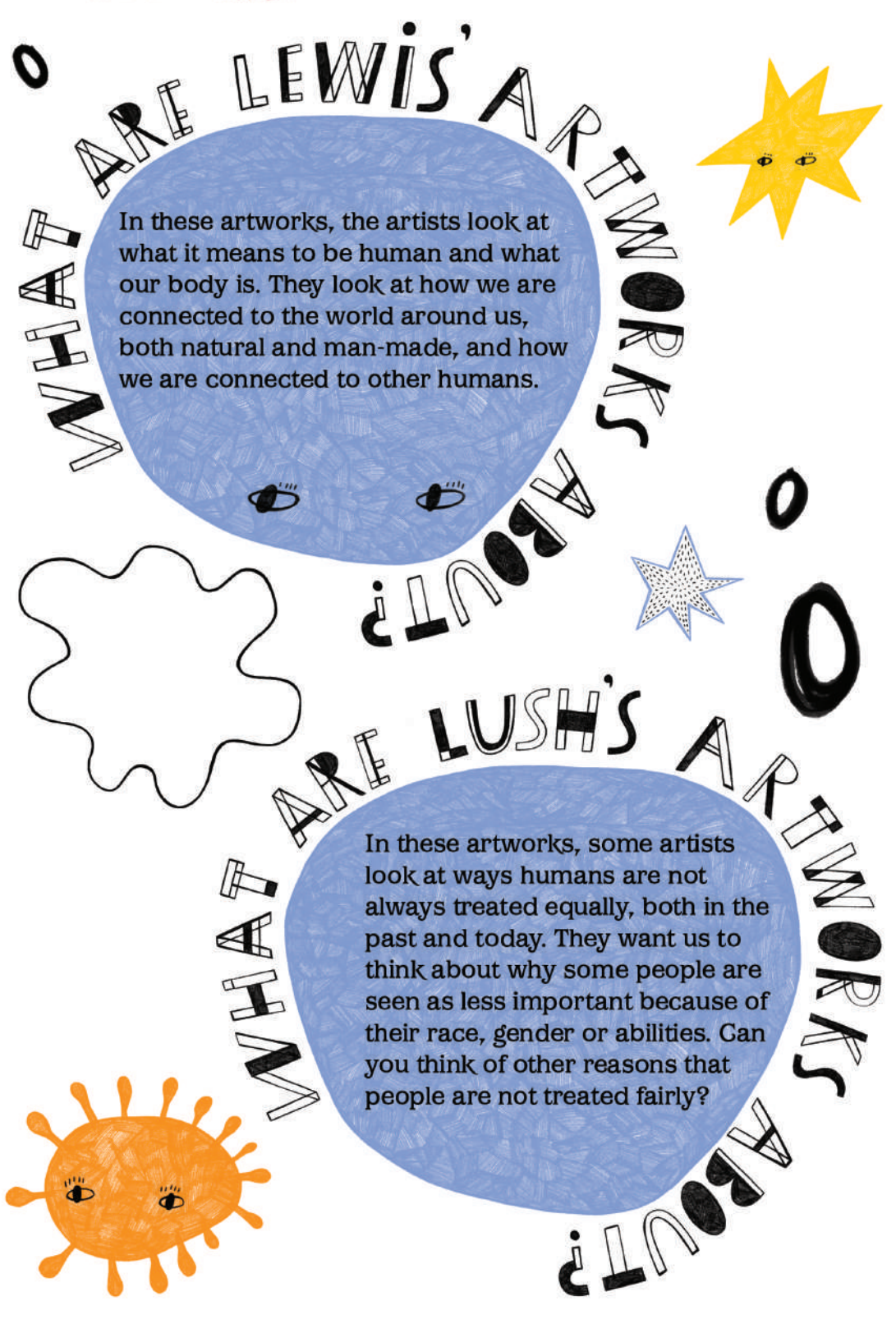
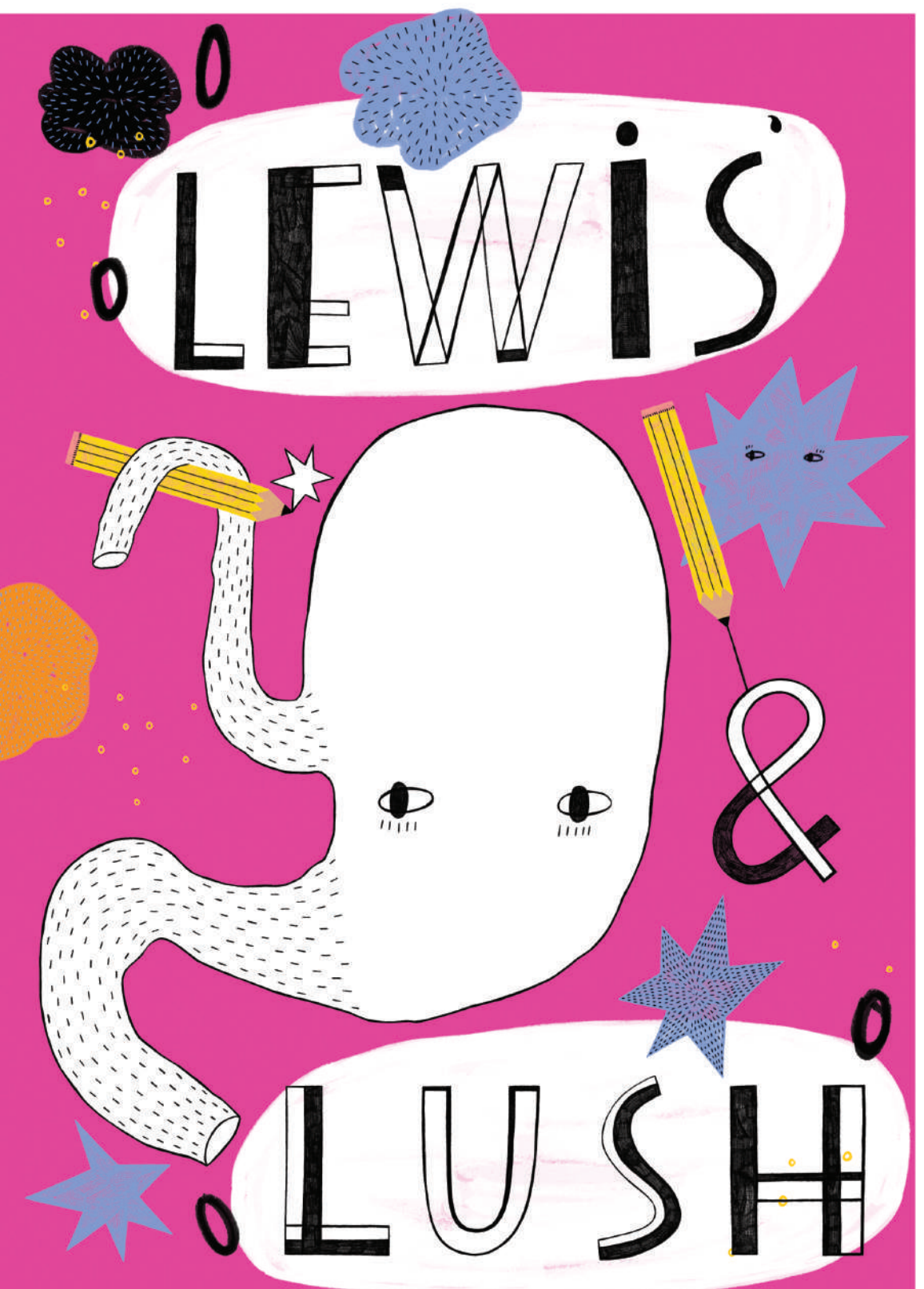
Think about the things that you use everyday, imagine they were part of your body, like in Diego Bianchi's art! Perhaps your hand has a phone inside. Draw your body with all the things you use connected to it.



Alice Channer imagines what small things would look like if they were made very large, like looking through a microscope. Look very closely at something, perhaps a rock or even your skin. What patterns can you see? Try drawing them here!



- NEO MUYANGA
- TENNA SUTELA
- CHRISTOPHER COIZER
- AYESHA HAMEED
- LUSH
- LVO JR SHIN
- LAMIN FOFANA
- JES FAN
- TAMILA JOHNSON-SMALL
- DIEGO BIANCHI
- RETO PULFER
- CAMILLE HENROT
- ANE GRAFF
- ALICE CHANNER
- LEWIS



In these artworks, the artists look at what it means to be human and what our body is. They look at how we are connected to the world around us, both natural and man-made, and how we are connected to other humans.

In these artworks, some artists look at ways humans are not always treated equally, both in the past and today. They want us to think about why some people are seen as less important because of their race, gender or abilities. Can you think of other reasons that people are not treated fairly?



WORDSEARCH

E	E	T	T	T	N	A	N	A	I	M	A	I	
K	I	N	S	H	I	P	E	A	I	P	O	O	I
A	D	S	E	N	E	H	A	B	R	L	T	H	M
R	A	S	S	P	M	O	C	E	A	N	H	S	C
C	E	O	C	I	E	R	U	T	A	N	E	E	V
A	B	O	D	Y	E	U	N	I	V	E	R	S	E
R	A	S	T	O	O	S	K	I	N	E	E	A	R
E	C	N	O	I	T	A	S	R	E	V	N	O	C
L	I	V	E	R	P	O	O	L	E	O	L	Y	R
T	B	E	C	N	B	S	N	M	H	T	Y	H	R
S	C	E	R	K	B	A	C	T	E	R	I	A	A
M	P	E	S	O	O	A	S	E	E	R	R	S	O
N	S	E	I	R	O	T	S	T	W	A	V	E	S
T	N	V	R	E	Y	V	O	S	M	A	K	H	S

- SKIN
- STORIES
- BACTERIA
- MOTHER
- BODY
- CARE
- UNIVERSE
- CONVERSATION
- WAVES
- NATURE
- LIVERPOOL
- KINSHIP
- OCEAN
- RHYTHM

Principal Funders

Arts Council England, Liverpool City Council, Founding Supporter James Moores, HM Government, Culture Recovery Fund

Delivery Partners

Tate, Open Eye Gallery, Bluecoat, VG&M, Culture Liverpool, Exchange Flacks, bruntwood, LUSH FRESH, Diageo 2000, Liverpool John Moores University, University of Liverpool, Liverpool Hope University, National Life Centre, Museum of American Art, Whitney Museum of American Art, ComCab, Photoworks, ARUP

Project Partners

Open Culture, a140, Art in Liverpool, Independent Biennial 2021, John Moores Painting Prize 2020, Art Night

Trusts and Foundations

Art Fund, Estate of Fanchon Fröhlich, The Granada Foundation, medicash Foundation, Henry Moore Foundation

International Agencies

Canada Council for the Arts, British Council, Austrian Cultural Forum, ife, OCA, Austrian Cultural Forum, The African Arts Trust, Embassy of Sweden London, Canada, AMECCID

Commissioning Circle

Catherine Pettigaw (Founding Member), Amalia Amoado, Rodney Miller, Erica Roberts

Director's Circle

Jo Bloxham, Jonathan Falkingham, Ethel Ozen

Logistics Partner

Convelio

Corporate Patrons

THE ANNEXE, bruntwood

Gallery Circle

Empty Gallery, Hong Kong Hauser & Wirth, Zurich/London/New York/Somerset/Los Angeles/Hong Kong/Gstaad, Galerie Buchholz, Berlin/Cologne/New York, Galerie Jocelyn Wolff, Paris Hollybush Gardens, London

Patrons

kamel mannour, Paris/London, KÖNIG GALERIE, Berlin, London, Seoul, Metro Pictures, New York, Monique Meloche Gallery, Chicago, Pippy Houldsworth Gallery, London

Jo and Tom Bloxham MBE, Louise and Paul Brady, Simon Edwards, Julie Falkingham, Mark Fletcher, David and Maggi Gilkes

Roland and Rosemary Hill, Paula Ridley CBE DL, John Shield, Kathleen Soriano, Peter Woods DL and Francis Ryan

Festival Partners

adagio, FAZENDA, HOTEL INDIGO, INNSIDE by Meliá Liverpool, LUBANI, pullman, Setina